

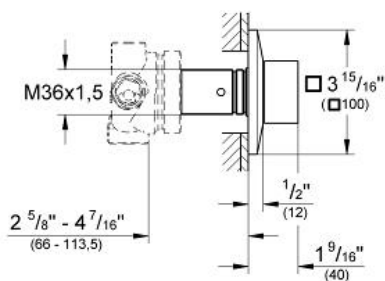
# ALLURE BRILLIANT 5-Port Diverter Trim

MODEL # 19799

*Pure Freude an Wasser*

**GROHE**

GROHE America, Inc | 200 North Gary Avenue, Suite G, Roselle, IL 60172  
Phone: +1 (800) 444-7643 | Fax: +1 (800) 225-2778 | us-customerservice@grohe.com



## Product Description:

### 5-Port Diverter Trim

## Standard Specification:

- Set for final installation for 29 035 000
- Without concealed body
- **GROHE StarLight®** finish
- Adjustable installation depth
- 2 1/2" - 4 1/2"

## Applicable Codes & Standards:

- Energy Policy Act of 1992
- ASME A112.18.1/CSA B125.1

## Color:

- 19799 000 chrome