

# EUROSTYLE COSMOPOLITAN

## Three-hole basin mixer

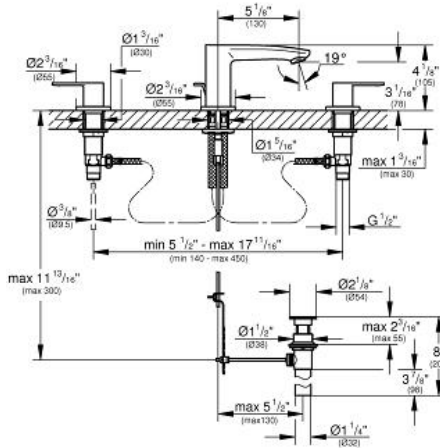
### S-Size

MODEL # 20209

Pure Freude an Wasser



GROHE America, Inc | 200 North Gary Avenue, Suite G, Roselle, IL 60172  
 Phone: +1 (800) 444-7643 | Fax: +1 (800) 225-2778 | us-customerservice@grohe.com



**Product Description:**  
 Three-hole basin mixer  
 S-Size

**Standard Specification:**

- GROHE EcoJoy® technology for less water and perfect flow
- GROHE StarLight® finish
- 1/2" ceramic cartridge (90° turn)
- 1 1/4" pop-up waste set
- GROHE QuickFix® installation system with centering support
- Union nut with 7/16" drilling
- Max Flow Rate: 1.5 gpm (5.7 L/min)

**Applicable Codes & Standards:**

- Energy Policy Act of 1992
- NSF 61
- ASME A112.18.1/CSA B125.1
- US Federal and State material regulations
- EPA WaterSense®
- ICC/ANSI A117.1

**Color:**

- 20209 00A chrome
- 20209 002 chrome