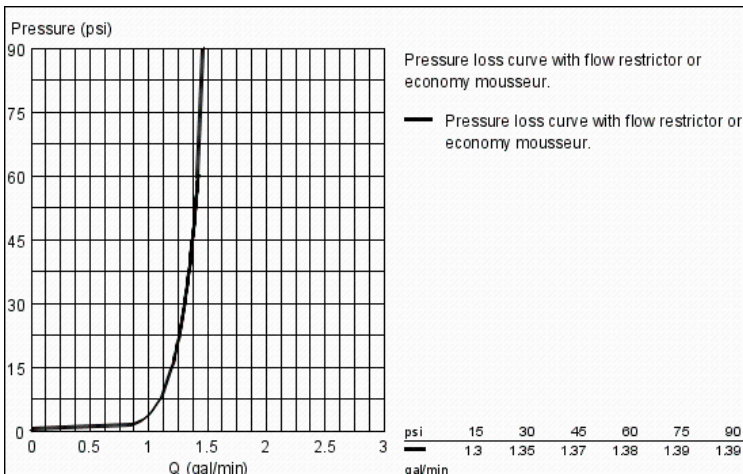
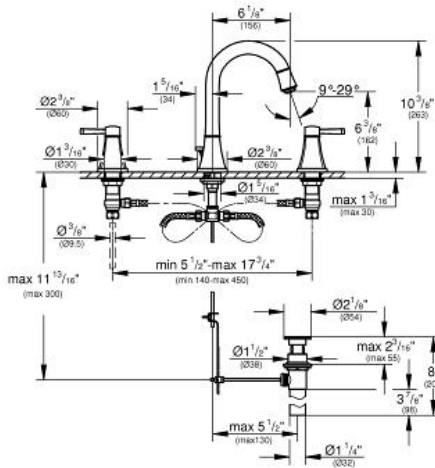


GRANDERA  
Three-hole basin mixer 1/2"  
M-Size

MODEL # 20419

GROHE America, Inc | 200 North Gary Avenue, Suite G, Roselle, IL 60172  
Phone: +1 (800) 444-7643 | Fax: +1 (800) 225-2778 | us-customerservice@grohe.com

Pure Freude an Wasser



**Product Description:**  
Three-hole basin mixer 1/2"  
M-Size

**Standard Specification:**

- Valves hot/cold with 1/2" cartridge (90°)
- GROHE StarLight® finish
- GROHE EcoJoy® technology for less water and perfect flow
- GROHE AquaGuide® adjustable aerator 5.7 l/min
- 1 1/4" pop-up waste set
- Max Flow Rate: 1.5 gpm (5.7 L/min)

**Applicable Codes & Standards:**

- Energy Policy Act of 1992
- NSF 61
- ASME A112.18.1/CSA B125.1
- US Federal and State material regulations
- EPA WaterSense®
- ICC/ANSI A117.1

**Color:**

- 20419 00A chrome
- 20419 000 chrome
- 20419 DA0 Warm Sunset
- 20419 EN0 brushed nickel
- 20419 ENA brushed nickel