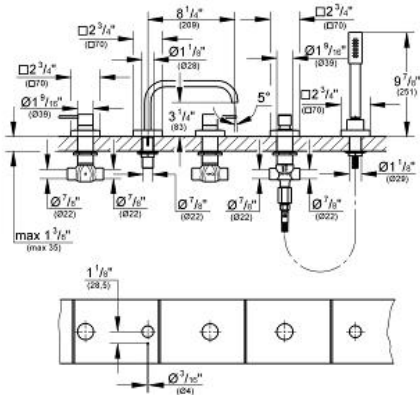


ALLURE
5-Hole Bath Combination
MODEL # 25097

Pure Freude an Wasser



GROHE America, Inc | 200 North Gary Avenue, Suite G, Roselle, IL 60172
Phone: +1 (800) 444-7643 | Fax: +1 (800) 225-2778 | us-customerservice@grohe.com



ADA

Product Description:
5-Hole Bath Combination

Standard Specification:

- With lever handle
- 1/2" ceramic cartridges (90° turn)
- **GROHE StarLight®** finish
- 8 1/4" bath tub spout without diverter
- Handshower (28 034)
- 79" metal shower hose
- An adapter is needed locally
- Max Flow Rate 13.2 gpm (50 L/min)

Applicable Codes & Standards:

- Energy Policy Act of 1992
- ASME A112.18.1/CSA B125.1
- ICC/ANSI A117.1

Color:

- 25097 000 chrome