

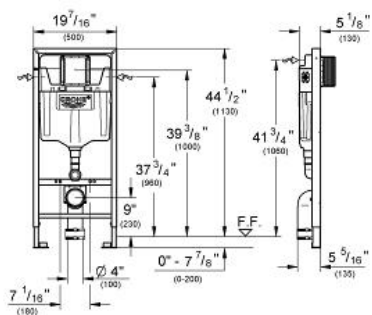
# Rapid SL for Toilet

MODEL # 38749001

*Pure Freude an Wasser*



GROHE America, Inc | 200 North Gary Avenue, Suite G, Roselle, IL 60172  
Phone: +1 (800) 444-7643 | Fax: +1 (800) 225-2778 | [us-customerservice@grohe.com](mailto:us-customerservice@grohe.com)



## Product Description: Rapid SL for Toilet

### Standard Specification:

- Flushing cistern (GD 2)
- With small maintenance access
- **44" installation height**
- For on-the-wall installations or studded walls
- Powder coated self-supporting steel frame
- For dry-cover (completely pre-assembled)
- For single or rail installation
- With fixed connections
- Quick adjustment, lockable
- Mounting material
- TÜV approved
- WC mounting screws (2x)
- Mounting kit for ceramic
- Distance of mounting screws (7" - 9")
- Depth adjustable
- Diameter Ø 3 " outlet elbow
- Transition (Ø 3 ")
- Inlet and outlet connecting set
- Flushing cistern (GD 2) 1.5 - 2.4 gpm
- Adjustment from factory (1.6 gal and .8 gal)
- Pneumatic discharge valve offering: 3 modes of operation: dual flush or start/stop or single flush
- Water supply from left, right, or back
- Low noise (group I acc. to/German Noise Specification)
- Insulated against condensation
- 1/2" water supply connection, includes integrated angle valve with push-fit flexible hose union
- no tools required for the installation of the inspection shaft incl. protection during construction phase
- **Accessories sold separately for-on-the-wall installation**
- Dual flush - .8 gpf and 1.6 gpf (3 L and 6 L)

### Applicable Codes & Standards:

- Energy Policy Act of 1992
- ASME A112.18.1/CSA B125.1

Color:

GROHE America, Inc | 200 North Gary Avenue, Suite G, Roselle, IL 60172  
Phone: +1 (800) 444-7643 | Fax: +1 (800) 225-2778 | [us-customerservice@grohe.com](mailto:us-customerservice@grohe.com)

□ 38749001 001 no colour